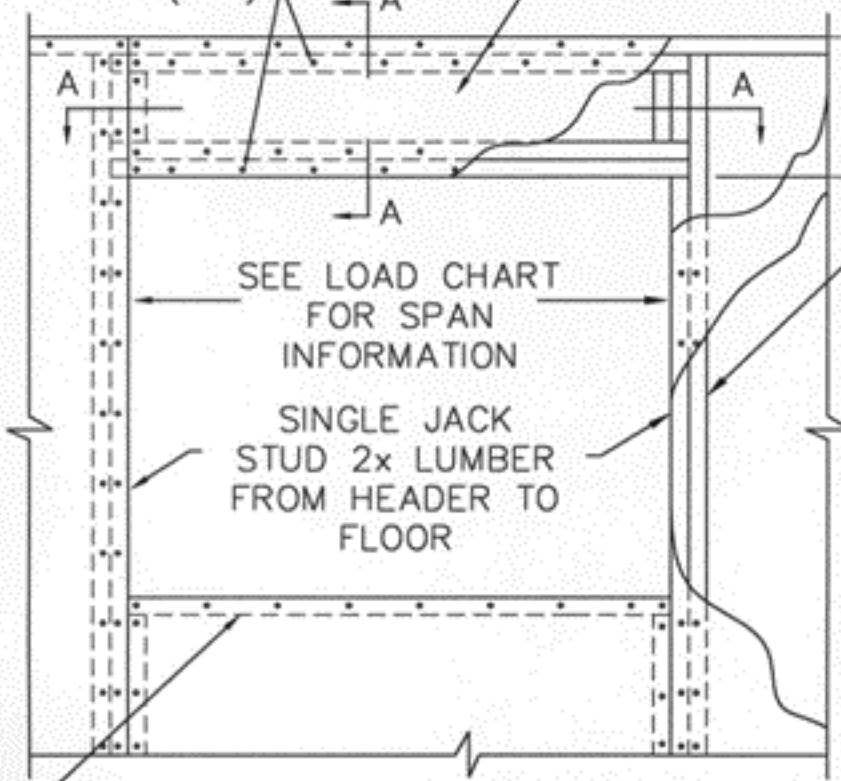


8D NAIL  
6" O.C. (MIN)

DOUBLE PLATE  
STRUCTURAL PANEL HEADER



12" MIN.

KING STUD  
AND JACK STUD  
RECESSED INTO  
PANEL

SEE LOAD CHART  
FOR SPAN  
INFORMATION

SINGLE JACK  
STUD 2x LUMBER  
FROM HEADER TO  
FLOOR

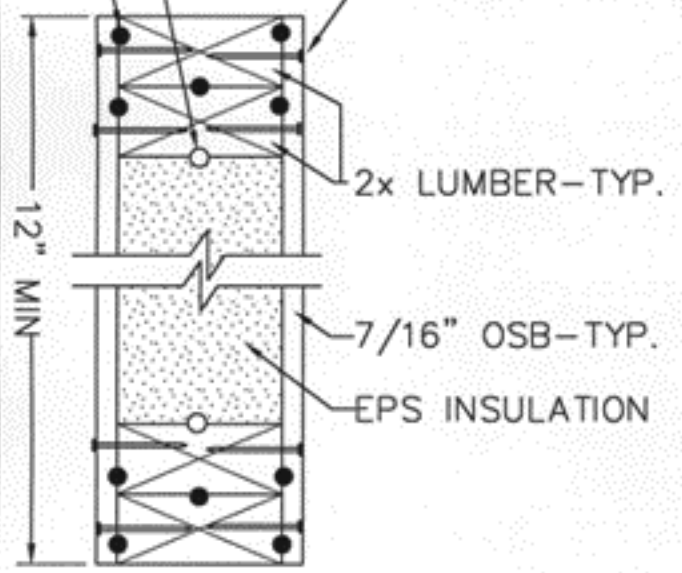
- ASSEMBLY SEQUENCE
1. ASSEMBLE HEADER WITH LUMBER PER INSTRUCTIONS
  2. INSTALL ADJACENT PANELS WITH LUMBER PER INSTRUCTIONS
  3. LOWER HEADER INTO POSITION FROM ABOVE
  4. FASTEN BY NAILING THROUGH PANEL SKINS WITH 8D RING SHANK, 6" O.C.

TOP PLATE—RECESSED IN LOWER PANEL

CAULK—CONTINUOUS BEAD— WOOD—TO—WOOD — TYP.

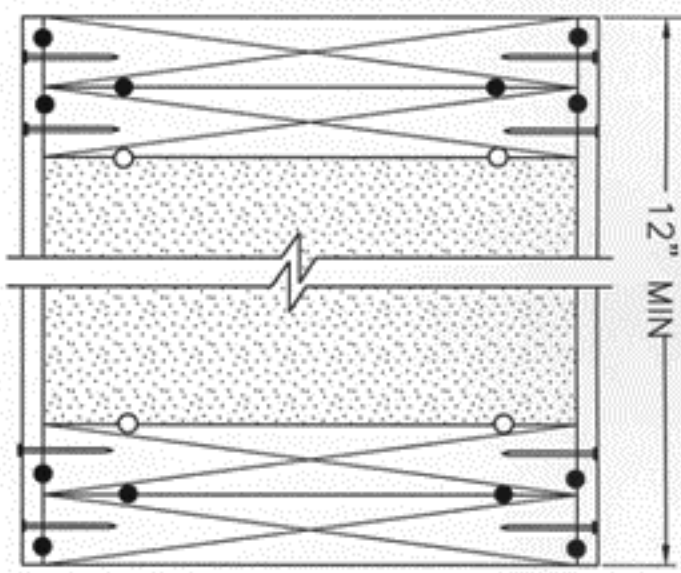
FOAM SEALANT—CONTINUOUS BEAD— EPS—TO—WOOD — TYP.

8d NAILS OR 14GA. 1 1/2" STAPLES—6" O.C.— TYP.



4 1/2" THICK  
DOUBLE PLATE  
HEADER

DETAIL A-A



12 1/4" THICK  
DOUBLE PLATE  
HEADER

STRUCTURAL INSULATED PANEL  
INSTALLATION GUIDE

TITLE DOUBLE PLATE INSULATED HEADERS  
- 4 1/2" & 12 1/4" THICK