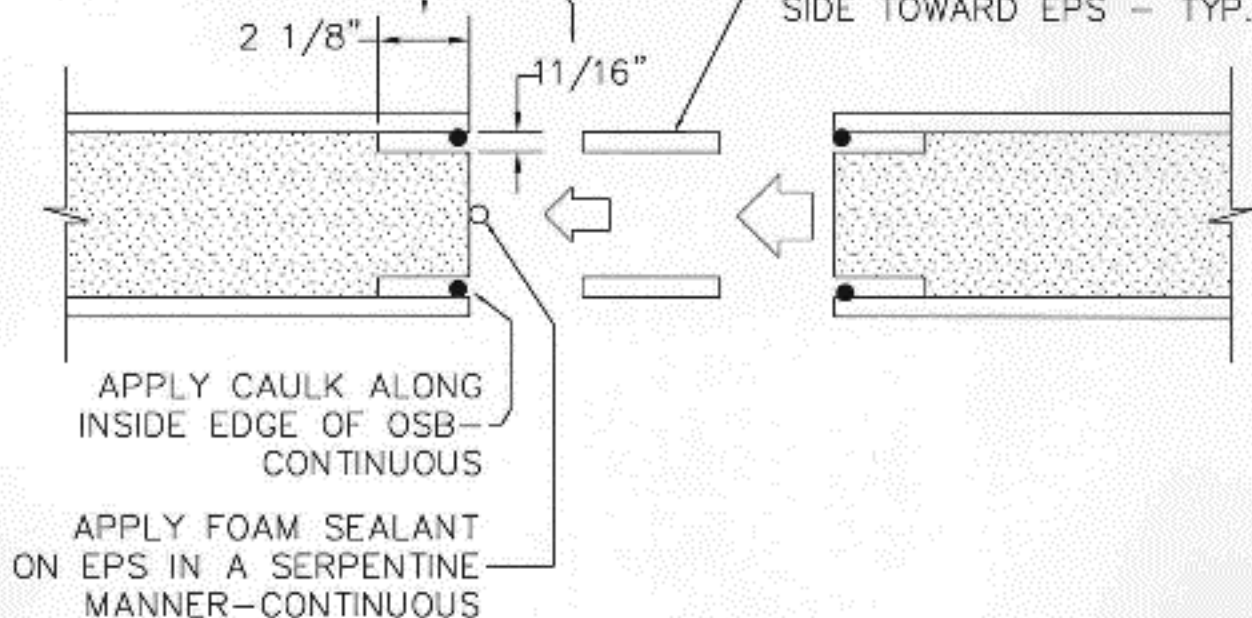


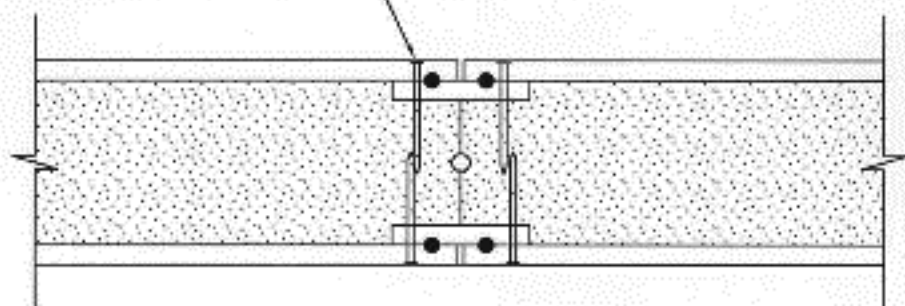
EPS REMOVED TO
PROVIDE CLEARANCE
FOR SPLINES - TYP.

OSB SURFACE SPLINE
5/8" x 4", INSERT SMOOTH
SIDE TOWARD EPS - TYP.



HORIZONTAL SECTION
PANELS BEFORE ASSEMBLY

8d NAILS OR # 14
1 1/2" STAPLES
6" O.C. STAGGERED
TYP. BOTH SIDES



HORIZONTAL SECTION
PANELS ASSEMBLED

STRUCTURAL INSULATED PANEL
INSTALLATION GUIDE

TITLE

PANEL-TO-PANEL CONNECTION
WITH SURFACE SPLINES

PORTER
STRUCTURAL INSULATED PANELS

V. H. PORTER, INC. 4240 N. 135th AVE HOLLAND, MI 49424 (616) 599-1983
11/02

38-101